



Volume 21, Spring Issue

April/May 2011

## Dear Gardening Friends:

### Inside this issue:

How to stop rising food prices...	2
Spring checklist for your garden	2
Perennial plant of the year...	3
Trees are the lungs of the planet	3
Landscape report	3
Not a fishy story...	4
The Botanix Guide...	4



As we write this note it really feels like spring has finally arrived. The sun is shining and the birds are singing. Robins are chirping about pecking the lawn for worms. The snow has almost disappeared. Spring is a wonderful season but also means time to get back outdoors for our gardening people!

**Botanix Oxford Insta-Shade** will help dress your gardens this year with many new outstanding arrivals in perennials, shrubs and trees. Find out how to 'spring' the lawn and flower gardens off to a great summer season with harnessing all of nature's magnificent power by adding rich organic matter and natural fertilizers to your

soil as soon as the weather permits.

As we are putting our spring newsletter together we realize the rising cost of postage to distribute the newsletters to our customers. With more and more people connecting with e-mail we would like to propose sending out the fall newsletter via e-mail. This means we will have to acquire e-mail addresses from our customers. This year for our \$500 dollar shopping spree *give a way*, please include your e-mail address on the ballot. Also this season the cashier will be asking for e-mail addresses as well. Botanix is working together with you and your garden in a eco-friendly manner!

Don't miss out on our **21st Annual Customer Appreciation Day** to be held from 8 a.m. to 5 p.m. on **Saturday, April 23rd** where we pay **YOUR tax!** You won't want to miss this day, and we don't want to miss you!

All the 'experts by nature' at **Botanix Oxford Insta-Shade** look forward to seeing all of our gardening friends this season!

Once again, we hope to see you at our **21st Annual Customer Appreciation Day**. Feel free to bring your family, friends and neighbours and we will pay THEIR tax too on **April 23rd!**

Kindly,  
*Jan and Susie Veldhuizen,*  
family and staff at Botanix Oxford Insta-Shade 🍷

### Did you know that:

- \* We are your one-stop 22,000 square foot garden centre?
- \* We are the 'big tree' movers' and can move trees up to 25 feet tall?
- \* We have over 90 acres of trees?
- \* We would love to have your e-mail address so we can e-mail you our newsletter?

## What is Mycorrhize? MYKE

For the last couple of years we have been promoting MYKE, a very popular product that will increase the warranty of your trees and shrubs for 5 years if used when planting.

MYKE, officially known as Mycorrhize, is also available for your

turf (lawns). Mycorrhize will improve turf sustainability, increase phosphorus absorption, reduce watering and ensure fast establishment. This great product is recommended especially for those with lawns in new subdivisions or any newly seeded lawns.

Find out more about MYKE with Mr. John B. Renaud, representative of Mycorrhize, who will be hosting a totally free seminar at **Botanix Oxford Insta-Shade on Thursday, April 21st at 7:00 p.m.** at our garden centre! 🍷



## How to stop rising food prices...

With food prices soaring globally, there has never been a better time to consider planting a vegetable garden. Growing your own veggies is satisfying and delicious, not to mention the health benefits!

If you have never grown veggies before, here are a few helpful hints to get you started. First choose an area that has at least six hours of full sun per day. Remember, the more sun your vegetables receive, the tastier they will be. Next, remove any existing sod, and dig in some well rotted manure or compost. This will increase the fertility of your soil. Most vegetables grow best in well-drained soil.

Before choosing what to grow, think of what your family likes to eat, as well as the size of the garden area. If your garden plot is small, it is best to avoid plants that sprawl and take up a lot of space such as squash, melons and cucumbers. Plants such as tomatoes and climbing beans have a high yield in relatively small areas.

As early as mid to late April 'cool weather vegetables' can be planted. These are lettuce, cabbage, onions, spinach, peas and radishes. These

plants are grown by sowing seeds directly into the ground. Seeds are available for sale at **Botanix Oxford Insta-Shade** starting in early March.

Plants that are sensitive to frost should not be planted until late May. These plants include tomatoes, peppers, melons, squash, beans and potatoes. Tomatoes and peppers are easiest to grow by buying seedling plants, which are available in mid May.

Select a sunny area of your yard for some 'perennial' veggies. Both Asparagus and Rhubarb are sold as bare-root plants in early April. Once planted they will yield a crop for many years to come.

Those who do not have a lot of space may consider tucking some colourful lettuces, swiss chard, red cabbage, artichoke or garlic into their flowerbeds. These plants are striking

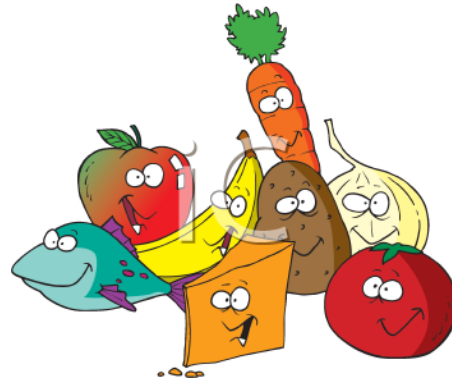
in either their foliage colour or shape and will add an interesting dimension to your garden. Herbs such as curly parsley and purple sage could add

scent and texture to your flowerbed. Some vegetables and fruits will grow in containers. A pot of cherry tomatoes, lettuces or strawberries will thrive on a sunny part of your deck or patio. Remember, plants in containers require more water and fertilizer than

those planted into the ground.

Vegetable gardening is a great activity for the whole family. Children love to help out, growing something tasty will make them very proud! Who knows, maybe they will even try something new!

For more information about vegetable gardening, ask the helpful staff at **Botanix Oxford Insta-Shade**. We offer free advice and remember we have the seeds and seedling plants too! 🍌



## Spring checklist for your garden...

- Sprinkle **BOTANIX** grass seed over thin areas in your lawn to thicken and strengthen the turf.
- Prune spring flowering shrubs and trees (e.g. forsythia, witch hazel, dauphine, flowering almond etc.).
- Keep your shrubs healthy by pruning out any branches that died back over the winter. Wait until the buds have begun to sprout before pruning to avoid removing potential blooms. Use a sharp pair of **BOTANIX**

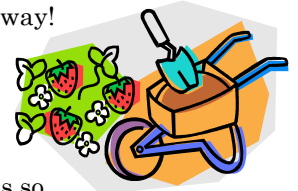


pruning shears so you don't damage healthy wood.

- Remove the winter protection from shrubs and evergreens before the temperature begins to heat up. High temperatures build up inside the burlap and can burn tender new growth.
- An application of **BOTANIX** dormant oil spray before leaf buds break will smother over-wintering adult insects and eggs.
- Give your annuals a great start. Spend a little time this spring digging in fresh soil amendments - **BOTANIX** compost, **BOTANIX** peat moss, manure or some new

**BOTANIX** weed-free topsoil will go a long way!

- Split late summer and fall blooming perennials so your garden doesn't become overgrown and to keep a tidy and fresh looking appearance.
- Pick up your **FREE** copy of the **Botanix Index** at our garden centre. This free reference tool will make a wonderful addition to your coffee table.
- Plan to attend our 21st annual Customer Appreciation Day. 🍌



## Perennial Plant of the Year...*Blue Star Amsonia*

Every year the Perennial Plant Association decides on a plant to become perennial of the year. For 2011, the winner is **Amsonia hubrichii**, also known as **Blue Star** or **Arkansas Blue Star**. This perennial is a North American native, which is hardy from zone 4-9.



**Blue Star Amsonia...a lovely and undemanding perennial...low maintenance and trouble free...**

**Blue Star** has clusters of light blue flowers from late spring to early summer. Once the plant has finished blooming, it is recommended that it be cut back to about six inches, which will help keep the stems upright and create a nice mound. The foliage of this perennial is one of its

best features. It is soft as silk, and the fine ferny foliage has a nice texture. The light green foliage really becomes a star in the autumn when it becomes bright golden yellow, one of only a few perennials that has brilliant fall colour.

**Amsonia hubrichii** should be planted in an area with full to partial sun. It prefers moist, well drained soils. Plant **Blue Star** in borders, native gardens, cottage gardens, and open woodland areas.

It does look best where it can be massed. **Blue Star** makes a good companion to ornamental grasses,

sedums, coral bells and summer blooming phlox.

This lovely and undemanding perennial is low maintenance and trouble free, with no known diseases or pests. **Botanix Oxford Insta-Shade** should have a limited quantity of this plant available for Customer Appreciation day on April 23, however many more will be available later on in the season. Keep an eye out for exciting new varieties of daylilies, coral bells and echinaceas.

**Botanix Oxford Insta-Shade** carries all of these varieties and more. **We will pay your tax if purchased on Customer Appreciation Day, Saturday, April 23rd.** If you have questions, our 'experts by nature' will help you. It's what we do at **Botanix Oxford Insta-Shade.** 👍

## Trees are the lungs of the planet...

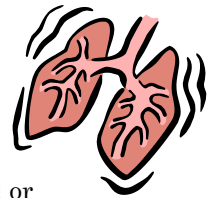


Spring is the time to plant and transplant large trees. Trees are the

lungs of the planet and create oxygen for the earth. We have three tree spades moving trees up to 25' tall with a nine-inch trunk diameter. Your trees are in **good hands on the move** with our qualified tree spade operators. They ensure planting is perfected to give your trees a fresh start in their new location. Watering the newly transplanted tree is the most important factor in the survival of the tree. **Botanix Oxford Insta-Shade** will provide our customers with wa-

tering guidelines after the tree has been planted from our field to your yard or moved from your yard to a different location.

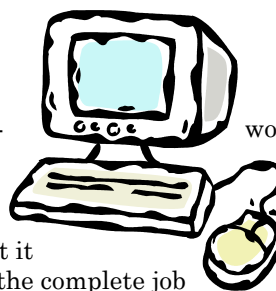
Our fleet includes three spades: a 90-inch, 80-inch and a 44-inch. Basically, a 90-inch tree spade can transplant up to a nine-inch caliper tree (can be up to 25 feet tall!). We serve all of South Western Ontario and offer free quotes! 👍



## Landscape report...

Creating a proper and attractive landscape for your property is sometimes overwhelming. With our Professional Landscape Designer Bryan, and his crew, we can help make the decisions simple and affordable. We can create a computer generated design to incorporate walkways, gardens and even large trees so you can have

an idea what the landscape will look like before you begin the project. You can take the design and work at it yourself or we will do the complete job for you. If the landscape is a large project, it is wise to do it in stages for example do hardscape (i.e. stone



work) the first year and the gardens the second year. Enjoy the season with a beautiful landscaped property.

Call **Bryan**, our professional Landscape Designer, at **519-424-2180**, for all your landscaping needs. We look forward in helping you make your property a dream come true! 👍



## Botanix Oxford Insta-Shade (2001) Inc.

593806 Highway 59 (at Holbrook)  
R.R. #2

Burgessville, ON N0J 1C0  
(10 km South of Woodstock)

Phone: 519-424-2180

Long-Distance: 1-800-387-0246

Fax: 519-424-2420

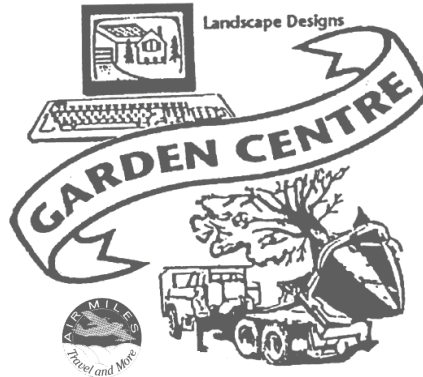
Website: [www.oxfordinstashade.com](http://www.oxfordinstashade.com)

E-mail: [info@oxfordinstashade.com](mailto:info@oxfordinstashade.com)

## "Experts by Nature"

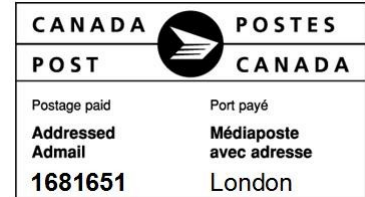
3% Bonus Bucks on  
all cash purchases!

**BOTANIX**  
OXFORD INSTA-SHADE INC.



### Garden Centre, Tree Farm and Landscape Design:

- Landscaping
- Large Tree Sales
- Paving Stone
- Interlocking Retaining Walls
- Tree Transplanting
- Ponds and Water Gardening
- Sodding and Seeding



### GARDEN CENTRE SPRING HOURS:

Mon. to Fri.: 8 a.m. to 8 p.m.

Sat.: 8 a.m. to 5 p.m.

Closed Sunday.

We are here to help you!

Place Address Label Here



Wij spreken  
Hollands.



## Not a fishy story...



Passing on tips from MICROBE-LIFT, the #1 selling and best bacterial product for keeping ponds clear on the market today.

*It's not time to safely begin feeding until the Nitrifying bacteria in your filter are functioning again (around 13° Celsius).*

As the seasons change, your fish become stressed and have a low immune system. MICROBE-LIFT has introduced a new herbal treatment that will be a must for every pond that contains fish. This treatment called MICROBE-LIFT /PARAZORYNE AND MICROBE-LIFT SABBACTISUN are effective against bacterial and parasitic diseases. This should be applied first thing in the spring as the fish become active.



Regular MICROBE-LIFT/PL and introducing MICROBE-LIFT/NITEOUT are an answer to a natural, clean, clear, non-toxic pond environment. Visit us on-line at [www.oxfordinstashade.com](http://www.oxfordinstashade.com) to subscribe to the monthly MICROBE-LIFT newsletter under the *Ponds & Water Garden Category*. For more information on MICROBE-LIFT, come out to our **free Pond Seminar on Wednesday, April 27 at 7:00 p.m.** at **Botanix Oxford Insta-Shade**.

Our MICROBE-LIFT representative and **Botanix Oxford Insta-Shade** staff will be on-site to answer questions and help you with your purchases! Mark your calendars! Your friends are

welcome! 🍷

## The Botanix Guide...

- ✓ **Dreaming...** Let your senses guide you so you can appreciate the landscaping of your home, no matter what the style is. We offer numerous original ideas to help you with your project.
- ✓ **Planning...** Choose amongst our selection of more than 850 species and cultivars. To help you choose the ele-

ments of your landscaping, you will find, for each plant section, numerous hints and suggestions.

- ✓ **Accomplishing...** Get information on the best techniques to create and maintain your landscaping.
- ✓ **Hurry...** Pick up a FREE copy of the **Botanix Index** on Customer Appreciation Day on **Saturday, April 23rd!**